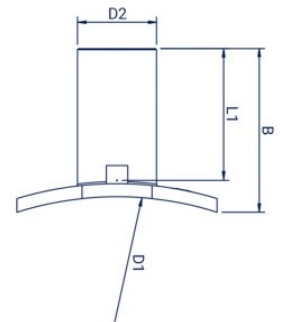
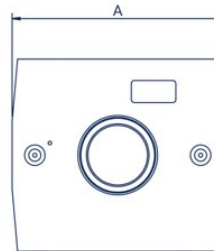
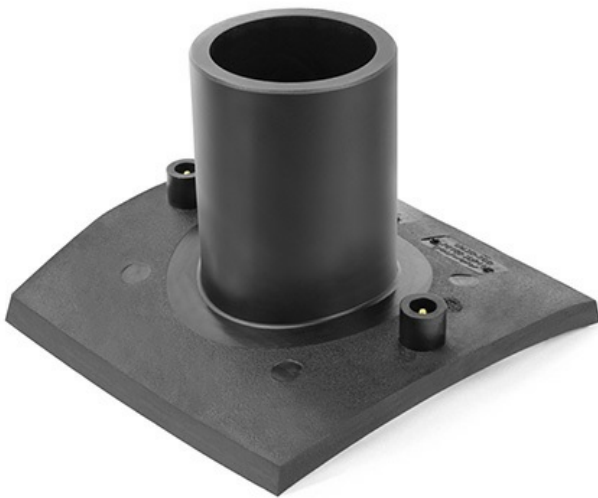




- material: PE 100-RC
- application: water and gas
- 16 bar water, 10 bar gas
- MRS - 10 MPa



Code	D1 (mm)	D2 (mm)	A (mm)	B (mm)	To be used with	L1 (mm)	Quantity per parcel
OE3555600631 1	355-560	63	210	165	FSGRIPXXX110	112	20
OE3555600751 1	355-560	75	210	165	FSGRIPXXX110	112	20
OE3555600901 1	355-560	90	210	165	FSGRIPXXX110	112	12
OE3555601101 1	355-560	110	210	165	FSGRIPXXX110	112	16
OE6309000631 1	630-900	63	209	155	FSGRIPXXX110	110	20
OE6309000751 1	630-900	75	209	155	FSGRIPXXX110	110	16
OE6309000901 1	630-900	90	209	155	FSGRIPXXX110	110	16
OE6309001101 1	630-900	110	209	155	FSGRIPXXX110	110	16

